

Ohana Care.

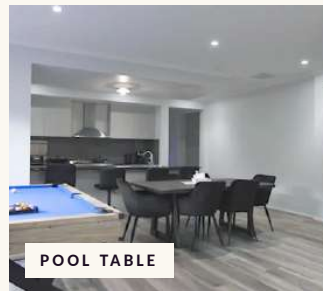
*A place to land. Six homes across
Melbourne, ready when you are — for short
stays, respite, or somewhere to settle in.*



MELBOURNE • WESTERN SUBURBS

A house with *room to breathe.*

Three bedrooms, a cinema room, a pool table, and the kind of open kitchen where mornings start without rushing. Suited to longer stays, families, or anyone who needs a bit more room.



PROPERTY

- 3 bedrooms
- 2 bathrooms
- Cinema room
- Pool table
- Open kitchen & living

BEST FOR

- Longer stays
- Family-style living
- Multi-participant SIL
- Quiet residential setting

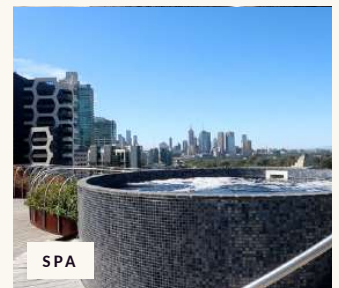
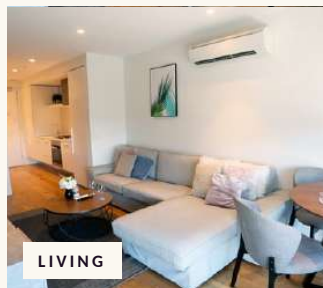
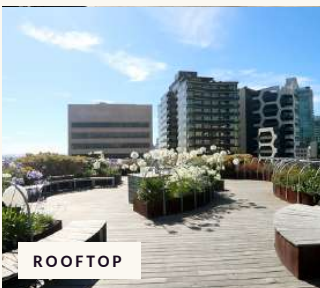
BOOK A TOUR

1300 515 996
admin@ohanacare.com.au
ohanacare.com.au

MELBOURNE CBD · ALBERT PARK

City light, *rooftop air.*

Two bedrooms a short walk from the bay, with a rooftop courtyard, balcony, and shared spa. Built for people who want the city close and the noise far away.



PROPERTY

- 2 bedrooms
- 2 bathrooms
- Rooftop courtyard
- Balcony
- Shared spa & pool

NEARBY

- Albert Park Lake — walk
- South Melbourne Market
- Trams to the CBD
- Beach within easy reach

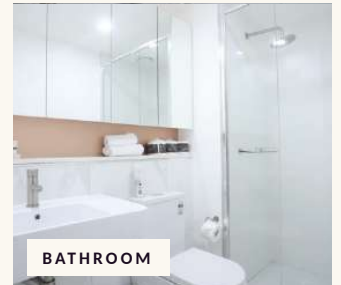
BOOK A TOUR

1300 515 996
admin@ohanacare.com.au
ohanacare.com.au

MELBOURNE CBD • SPENCER STREET

Steps from *everywhere.*

Two bedrooms in the heart of the city, with a private courtyard and Southern Cross Station six hundred metres away. Ideal for short stays and visitors who want to land and explore.



PROPERTY

- 2 bedrooms
- 2 bathrooms
- Private courtyard
- Open kitchen & living

NEARBY

- Southern Cross Station — 600m
- Flagstaff Station — 500m
- Marvel Stadium — 700m
- Trams at the door

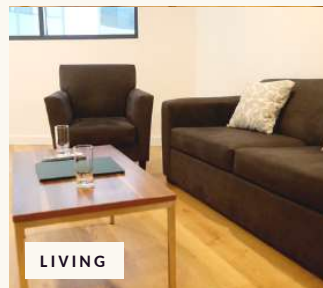
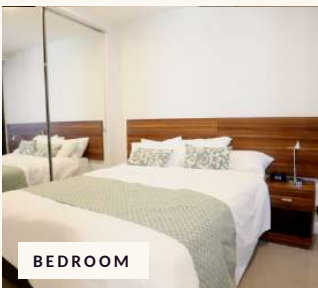
BOOK A TOUR

1300 515 996
admin@ohanacare.com.au
ohanacare.com.au

MELBOURNE CBD • FLAGSTAFF

A pool, *a quiet lap.*

Two bedrooms with a balcony, a shared indoor pool and gym, and Flagstaff Gardens at the corner. Suited to people who like to start the day in the water before the city wakes up.



PROPERTY

- 2 bedrooms
- 1 bathroom
- Balcony
- Indoor pool & gym
- Open kitchen & living

NEARBY

- Flagstaff Station — 500m
- Southern Cross — 900m
- Flagstaff Gardens at the door
- Trams & CBD walking

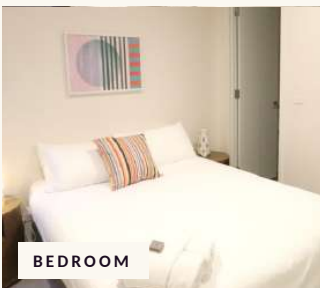
BOOK A TOUR

1300 515 996
admin@ohanacare.com.au
ohanacare.com.au

MELBOURNE CBD · SOUTHBANK

Step-free, *market-close.*

Two bedrooms, two bathrooms, a balcony, and a step-free entry. South Melbourne Market is three hundred and fifty metres up the road — fresh bread by mid-morning if you want it.



PROPERTY

- 2 bedrooms
- 2 bathrooms
- Wheelchair accessible
- Balcony
- Open kitchen & living

NEARBY

- South Melbourne Market — 350m
- Port Melbourne Beach — 2.6km
- Trams to the CBD
- Albert Park Lake — close

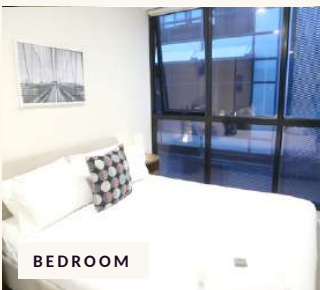
BOOK A TOUR

1300 515 996
admin@ohanacare.com.au
ohanacare.com.au

MELBOURNE CBD · SOUTHBANK

A quieter *second floor.*

A second Southbank apartment, sister to the first — same building, simpler floorplan. Two bedrooms, one bathroom, balcony, and step-free access for wheelchair users.



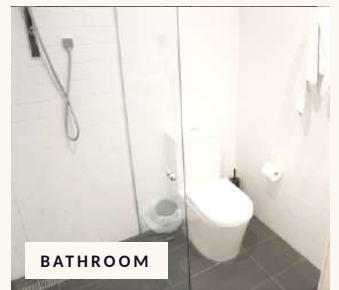
BEDROOM



LIVING



KITCHEN



BATHROOM

PROPERTY

- 2 bedrooms
- 1 bathroom
- Wheelchair accessible
- Balcony
- Open kitchen & living

NEARBY

- South Melbourne Market — 350m
- Port Melbourne Beach — 2.6km
- Trams to the CBD
- Albert Park Lake — close

BOOK A TOUR

1300 515 996
 admin@ohanacare.com.au
 ohanacare.com.au